

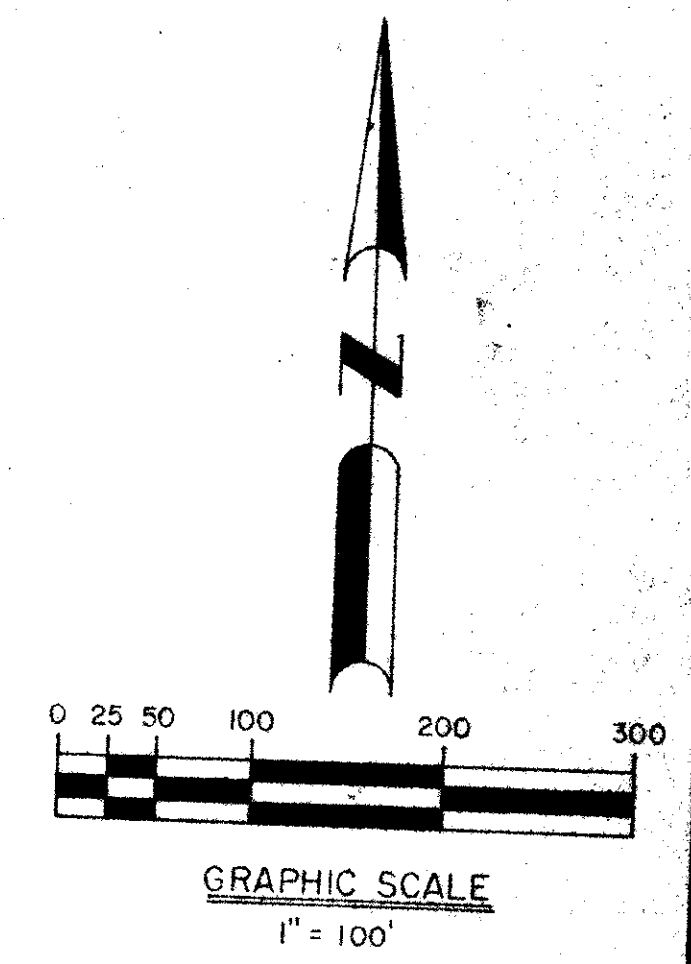
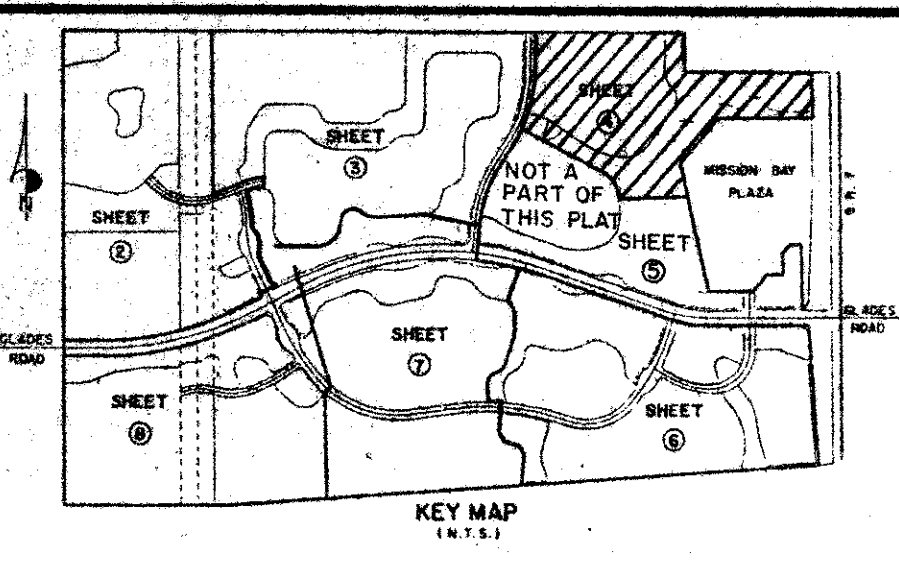
53/115

115

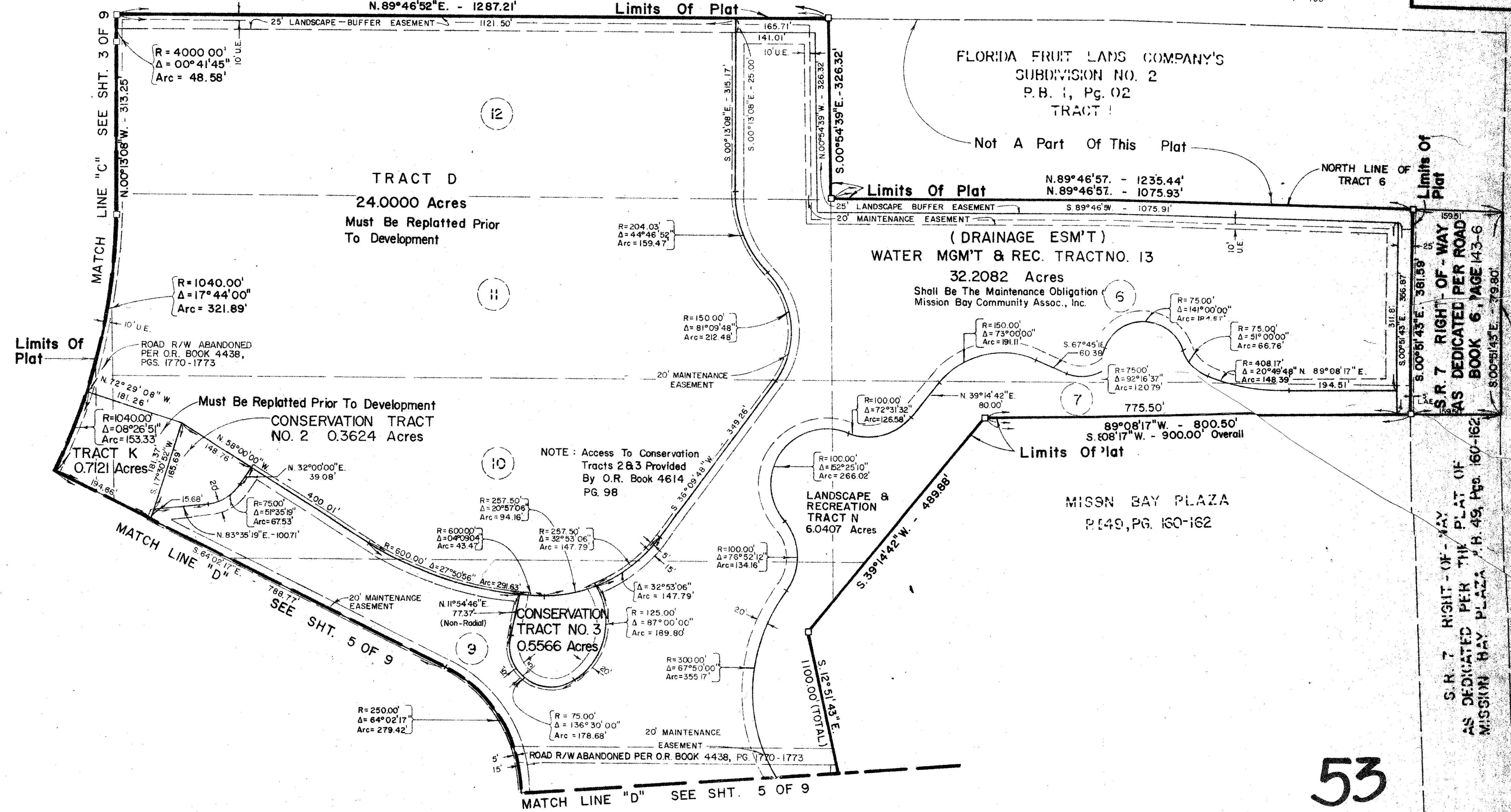
MISSION BAY

A P.U.D.

IN SECTIONS 13 & 14, TOWNSHIP 47 SOUTH, RANGE 41 EAST, PALM BEACH COUNTY, FLORIDA. BEING A PORTION OF THE EAST 1/4 OF SECTION 14 AND A REPLAT OF A PORTION OF TRACTS 7, 8, 9, 10, 23, 24, 33, 34, 40, 41, 49, 50, 51, 55, 56, 57, 63, 64, AND ALL OF TRACTS 6, 11, 12, 21, 22, 25-28, 35-39, 42-48, 52-54 & 58-62. INCLUSIVE OF THE PLAT OF FLORIDA FRUIT LANDS COMPANY'S SUBDIVISION NO. 2 OF SECTION 13-47-41, AS RECORDED IN PLAT BOOK 1, PAGE 102. PALM BEACH COUNTY, FLORIDA.



BOCA GREEN - PLAT NO. 2 P.B. 39, Pgs. 161 - 163



S.R. 7 RIGHT-OF-WAY AS DEDICATED PER THE PLAT OF MISSION BAY PLAZA P.B. 49, PGS. 160-162

S.R. 7 PER R.B. 1, PG. 35

EAST LINE SECTION 15-47-41

53

115

0454-002

MISSION BAY

THIS INSTRUMENT PREPARED BY
MICHAEL T. KOLDZIEJCZYK
P.L.S. 3864 STATE OF FLORIDA
LAWSON & NOBLE, INC.
ENGINEERS - PLANNERS - SURVEYORS

DRAWING NUMBER
PLAN HOLD CORPORATION • IRVINE, CALIFORNIA
REGISTERED BY NUMBER 07384

DRAWING NUMBER
PLAN HOLD CORPORATION • IRVINE, CALIFORNIA
REGISTERED BY NUMBER 07384

DRAWING NUMBER
PLAN HOLD CORPORATION • IRVINE, CALIFORNIA
REGISTERED BY NUMBER 07384